

Like 0 Tweet 2 Share

[Click to view this email in a browser](#)



Kindness to Animals has no Boundaries

September 2014

[Forward this message to a friend](#)

In AKI's August newsletter, we told you about the rigorous standards that we hold our partner organizations to--they provide financial accounting for every dollar, dram, kwacha, and shilling that AKI sends. They also account for our funds through stories and pictures like the before-after pictures below. All of these successes are attributable to you, our donors, and the hard work and dedication of AKI's POs.

100% of your donations go directly to our partners in animal welfare. AKI works with organizations in Uganda, Tanzania, South Sudan, Namibia, Malawi, Ghana, Bosnia, Armenia, Jamaica, Honduras, and Suriname. Join us for an International Fundraising Holiday Potluck!

No matter where you live, you can be part of our international holiday fundraiser. Join us by hosting a potluck breakfast, lunch, or dinner for your friends, family, and colleagues who care about animals. Choose a day during December; request that your guests bring a dish to share--we'll supply some recipe suggestions from our POs' countries. Ask your guests to bring a donation (you may wish to set a minimum, that's up to you). Consider having the AKI brochure available (you can find it here: <http://www.animal-kind.org/supportus.html> --at the bottom of the page).



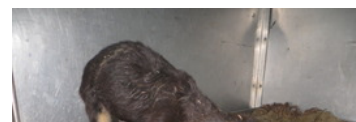
Plan a 5-10 minute talk for your guests--use the potluck as your chance to speak up for animals in the poorest countries; for our POs that do so much with so little; for AKI (100% of potluck donations will be sent to our POs). If you'd like, you can designate 1 or more AKI PO. You may wish to have a theme potluck with foods like ugali (picture above) from Tanzania, for example, and designate Tanzania Animal Welfare Society for the funds you raise.

No matter what you decide, your potluck fundraiser will help us grow more AFTER pictures, like the ones below.

For more information, contact me, I'd be happy to discuss your ideas!

Marvin in Malawi: Before & After

Marvin was 1 of 5 puppies left outside the Lilongwe SPCA compound in early August. Sadly, his 4 siblings



died, but Marvin was a fighter, and grew stronger by the day. In the BEFORE picture to the right, you can see Marvin a couple of days after he was dumped, already looking much better. Just about one month after he arrived at the LSPCA, he was ready for adoption. It didn't take long for him to find his forever home (see the below AFTER picture of his new adoptive family).



Lilongwe SPCA: Cat Quarantine Before X 2

With AKI's 2nd disbursement of 2014 to LSPCA, they will replace this temporary quarantine facility (now the LSPCA office serves as quarantine, see BEFORE photo to the right) with this structure (BEFORE photo below), which will be refurbished into a first class quarantine facility. LSPCA to modify into cat quarantine. When the facility is completed, we'll post the AFTER pictures! LSPCA is still in need of donations to care for the dogs and cats they take in--AKI donations also fund purchase of dog and cat food, vet supplies, repairs--often these are the LSPCA priorities that no one else will fund (because funding organizations often only support very specific projects).



<http://www.animal-kind.org/malawigroup.html>

Uganda SPCA's Tata: Before & After

Tata is one of many lucky dogs that the USPCA has rescued and rehabilitated thanks to AKI donors. Tata was found on the side of the road, close to death (see BEFORE picture below, her 1st day at the USPCA's Haven). Within just a few weeks (see AFTER picture to the right), she recovered fully, loves to eat and play, and the best news...she's been adopted!





AKI disbursements to Uganda SPCA cover transport to pick up dogs and cats and bring them to the Haven, dog and cat food, shelter repairs, vet supplies and medicines, and other critical needs. To help the USPCA transform more dogs and cats, designate them for your donation here:

<http://www.animal-kind.org/supportus.html>

Want to be part of AKI's critical rescue work.....but you don't have the money to buy an airline ticket? Watch the videos we've posted of Kingston Community Animal Welfare at work, and you'll feel like you're there!

<http://www.animal-kind.org/jamaicaphotoalbum.html>

If the videos inspire you as much as they do me, consider donating to AKI and designating KCAW, or consider these other ways of supporting AKI's partner organizations:

If you have a matching gift program at work, donate through your workplace charitable giving program, and let your colleagues know about AKI too!

Donate to our GlobalGiving campaign--only accepting donations up to September 30--where \$50 will buy a doghouse for a needy dog in Namibia. If you'd like to purchase a doghouse as a holiday gift in someone's honor, we'll send a nice holiday note. <http://www.globalgiving.org/projects/provide-safe-haven-for-120-dogs/>

Thank you very much for helping the neediest of animals!

Karen Menczer, Director
&
The AKI Board

We hope you enjoy hearing from us, but if you no longer wish to receive AKI updates, please reply to this message with "Unsubscribe" in the subject line or simply click on the following link: [Unsubscribe](#)

Animal-Kind International
POB 300
Jemez Springs, New Mexico 87025
US

[Read](#) the VerticalResponse marketing policy.

vertical DELIVERED BY
response
Try It Free Today!